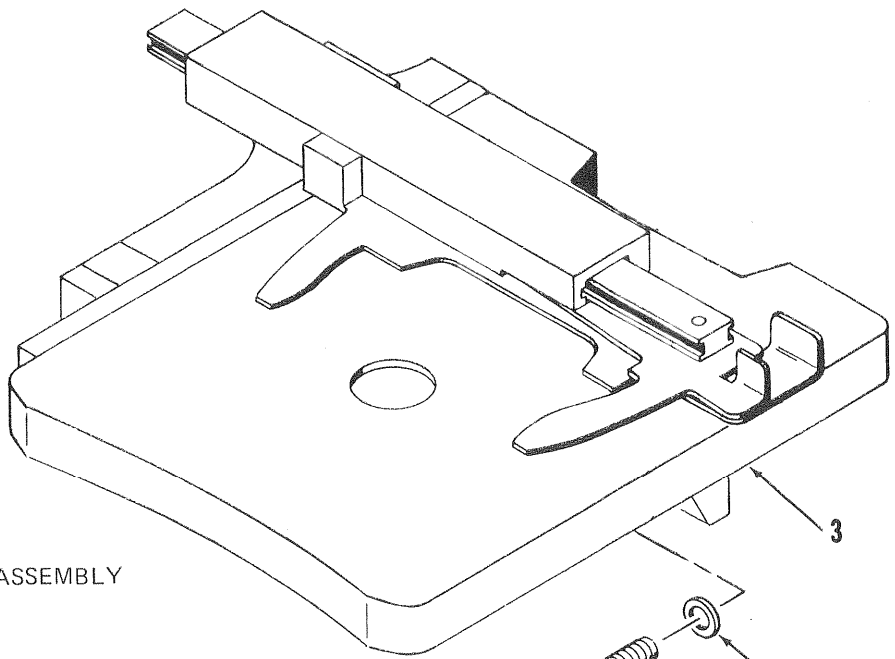
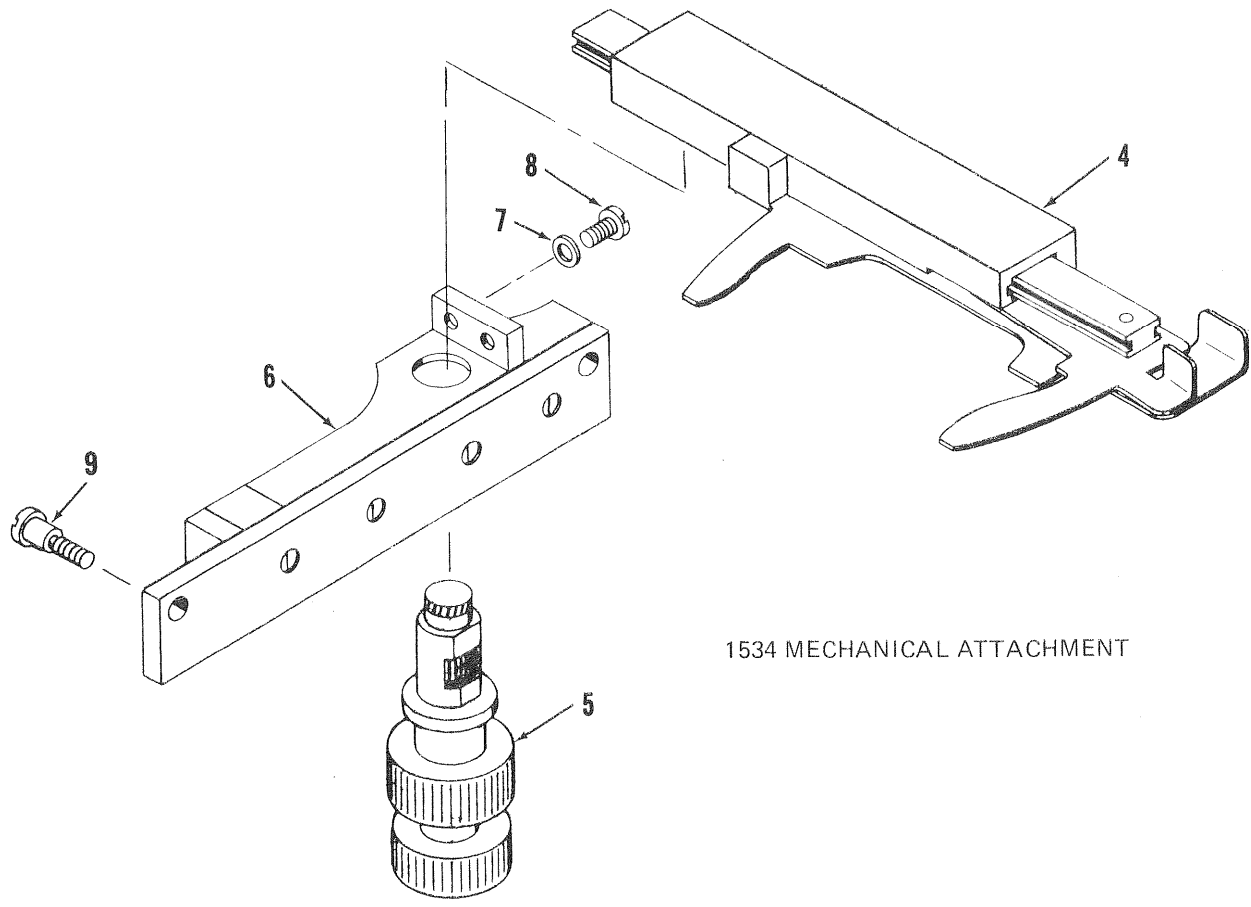


Figure 6. Illuminator Assembly

Index No.	Part No.	Description	Qty
	Cat. No. 614A	Illuminator Assembly	
1	632-852	Condensing Lens Assembly	1
2	X-53031	Cord Set	
3	632-1	Socket, lamp	1
4	60-389	Bracket, socket	1
5	X-30764-2	Screw	2
6	60-390	Cover Plate	1
7	611	Lamp, 15W, 115V (mfrs. designation 15S11/102)	1
8	632-2	Switch, pushbutton	1
9	X-30765-2	Screw	2
10	632-6	Retaining Ring	1
	Cat. No. 613	Lamp, 15W, 230V (mfrs. designation 15S11/101 with medium screw base)	1



1581A MECHANICAL STAGE ASSEMBLY



1534 MECHANICAL ATTACHMENT

Figure 7. Mechanical Stage

Figure 7. Mechanical Stage

Index No.	Part No.	Description	Qty
	Cat. No. 1581A	Mechanical Stage Assembly (includes items 1, 2, 3 and Cat. No. 1534)	
	Cat. No. 1534	Mechanical Attachment (includes items 4, 5, 6, 7 and 8)	
1	X-36089	Screw	2
2	X-16090	Washer	2
3	1579-2	Stage	1
4	1534-850	Slide and Finger Assembly	1
5	1534-851	Control Assembly	1
6	1534-855	Frame Assembly	1
7	X-16332	Washer	2
8	1534-40	Screw	2
9	1580-2	Screw	2

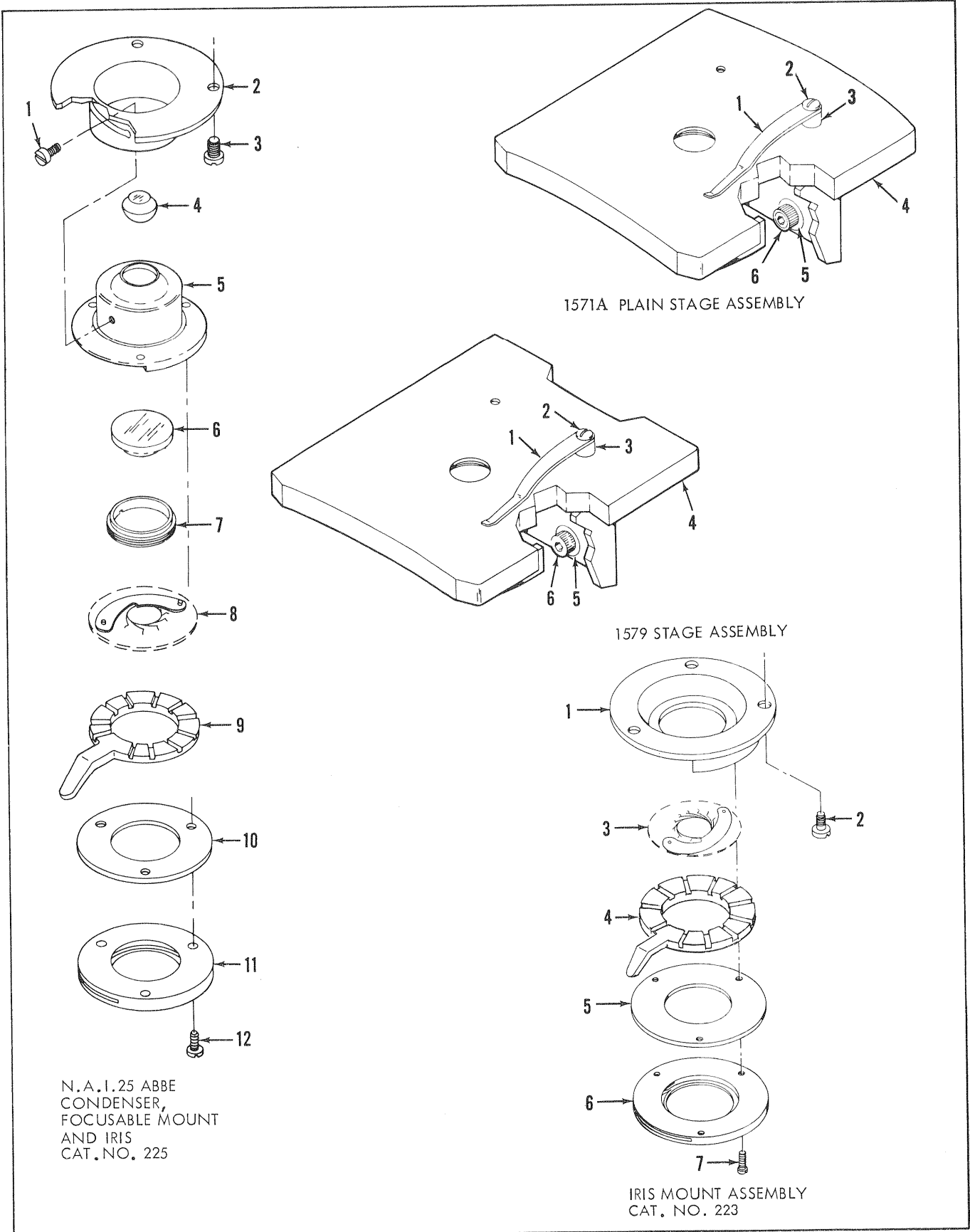


Figure 8. Plain Stage, Condensers, and Iris Mount Assembly

Figure 8. Plain Stage, Condensers, and Iris Mount Assembly

Index No.	Part No.	Description	Qty
	Cat. No. 223	Iris Mount Assembly	
1	223-2	Mount, iris	1
2	X-30388-2	Screw	3
3	1093-851	Iris Leaf Assembly	11
4	225-5	Ring, shifting	1
5	223-4	Retainer	1
6	223-3	Holder, blue glass	1
7	0138-4	Screw	3
	Cat. No. 225	N. A. 1.25 Abbe Condenser, Focusable Mount and Iris	
1	228-5	Screw	1
2	225-4	Bearing, sleeve	1
3	X-30388-2	Screw	3
	225-851	Iris Mount Assembly (includes items 4, 5, 6, 7)	1
4	233-602	Lens, front	1
5	225-2	Mount, iris	1
6	233-601	Lens, back	1
7	225-7	Ring, retaining	1
8	1093-851	Iris Leaf Assembly	11
9	225-5	Ring, iris shifting	1
10	223-4	Retainer	1
11	223-3	Holder, blue glass	1
12	0138-4	Screw	1
	Cat. No. 1571A	Stage, simple, complete	
1	60-25	Clip, stage	2
2	X-30750-2	Screw	2
3	60-24	Bushing, stage clip	2
4	1570-2	Stage	1
5	X-16090	Washer	2
6	X-36090	Screw	2
	Cat. No. 1579	Stage, simple, complete	
1	60-25	Clip, stage	2
2	X-30750-2	Screw	2
3	60-24	Bushing, stage clip	2
4	1579-2	Stage	1
5	X-16090	Washer	2
6	X-36090	Screw	2